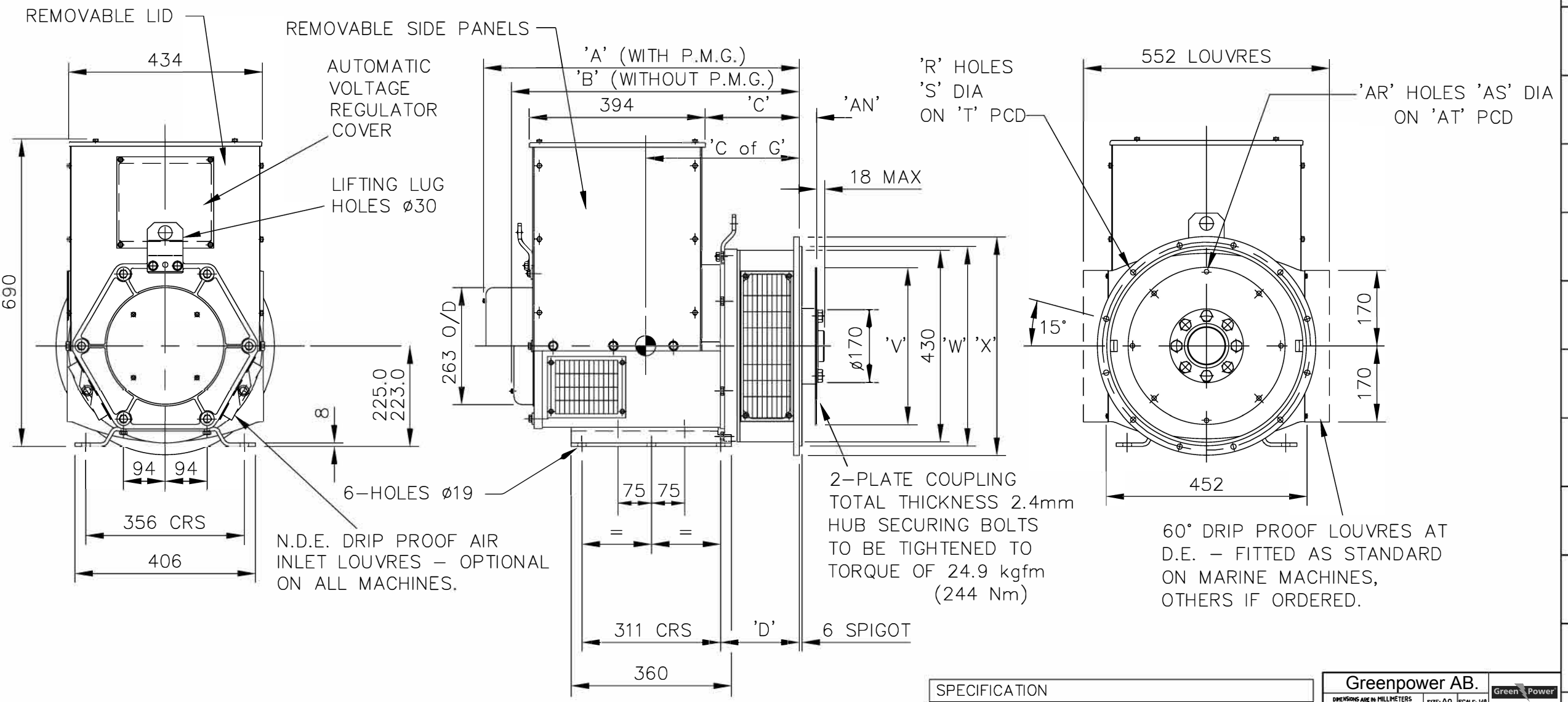


24 23 22 21 20 19 18 17 16 15 14 13 12 11 10 9 8 7 6 5 4 3 2 1

| FRAME | DIMENSIONS |       |       |        | NETT WT (Kg) |
|-------|------------|-------|-------|--------|--------------|
|       | A          | B     | C     | C of G |              |
| 224C  | 724.3      | 661.3 | 224.3 | 323    | 271          |
| 224D  | 724.3      | 661.3 | 224.3 | 333    | 284          |
| 224E  | 814.3      | 751.3 | 314.3 | 348    | 311          |
| 224F  | 814.3      | 751.3 | 314.3 | 358    | 331          |
| 224G  | 859.3      | 796.3 | 359.3 | 373    | 381          |
| 224V  | 769.3      | 706.3 | 269.3 | 358    | 321          |

| S.A.E No. | FLANGE ADAPTORS |    |      |       |       |     |
|-----------|-----------------|----|------|-------|-------|-----|
|           | D               | R  | S    | T     | W     | X   |
| 1         | 191.3           | 12 | 12.7 | 530.2 | 511.1 | 553 |
| 2         | 177             | 12 | 11   | 466.7 | 447.6 | 490 |
| 3         | 177             | 12 | 11   | 428.6 | 409.5 | 451 |
| 4         | 177             | 12 | 11   | 381   | 361.9 | 403 |

| S.A.E No. | DISC COUPLINGS |    |      |       |       |
|-----------|----------------|----|------|-------|-------|
|           | AN             | AR | AS   | AT    | V     |
| 7.5       | 30.2           | 8  | 8.7  | 222.3 | 241.2 |
| 8         | 62             | 6  | 11   | 244.4 | 263.4 |
| 10        | 53.8           | 8  | 11   | 295.3 | 314.2 |
| 11,5      | 39.6           | 8  | 11   | 333.3 | 352.3 |
| 14        | 25.4           | 8  | 13.5 | 438.2 | 466.6 |



SPECIFICATION  
UC224, C,D,E,F,G,V, 1-BRG, UNIVERSAL FOOT

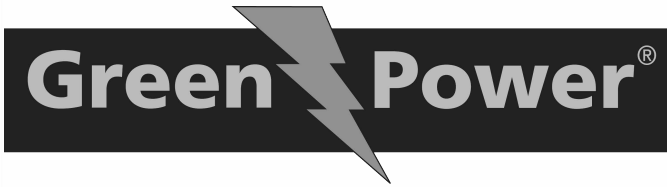
Greenpower AB.

DIMENSIONS ARE IN MILLIMETERS  
SCALE: 1:10  
SIZE: A0

Green Power

CAD SYSTEM  
AutoCAD

24 23 22 21 20 19 18 17 16 15 14 13 12 11 10 9 8 7 6 5 4 3 2 1



**Part Number: 23-2001**

|                         |                |                       |                 |
|-------------------------|----------------|-----------------------|-----------------|
| Change Notice           | CN00009928     | Alternates            |                 |
| Manufacturer Part (MEP) | No             | Usage                 | Production Only |
| Release Phase Code      | Production (P) | Drawing Specification | DS23-2001       |
| External Regulations    |                |                       |                 |

3D image provided when available for visual reference only.

**Associated Specifications**

| Number     | Name                   | Type                      | Category               | Sub-Category  |
|------------|------------------------|---------------------------|------------------------|---|
| ESA030B356 | SPECIFICATION,MATERIAL | Engineering Specification | Material Specification | Prohibited and Restricted <br>Prohibited and Restricted |

**Drawing Revision Information**

| Description of Change(s)      |
|-------------------------------|
| SAE7.5 COUPLING OPTION ADDED. |

**Drawing Authorization**

|          |                          |      |           |
|----------|--------------------------|------|-----------|
| Drafter  | Darren George Robert Lee | Date | 01OCT2019 |
| Checker  | Andrew Savill            | Date | 01OCT2019 |
| Approver | NO APPROVAL REQUIRED     | Date |           |

Document Generated: 01OCT2019 14:24 GMT